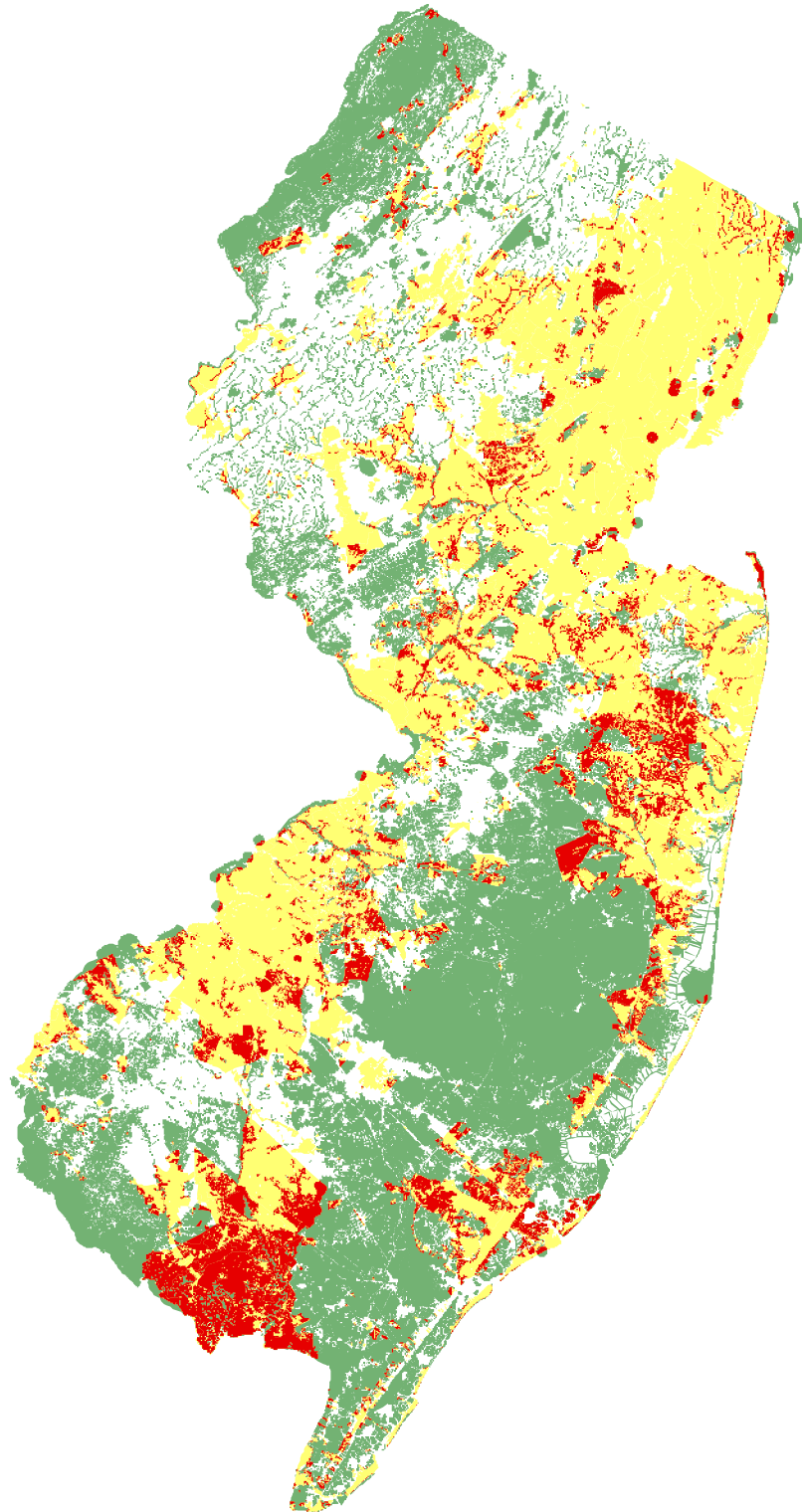





Comparing Sewer Service Areas (SSA) Against Protected Environmentally Sensitive Areas 25 or More Continuous Acres



-  Old SSAs pulled back as per new regulations
-  SSA boundaries (11/2008 update)
-  Protected Environmentally Sensitive Areas that are 25+ acres

DRAFT

Protected Environmentally Sensitive Areas Include:

- Bald Eagle Foraging Habitat (345) [2007 update]
- Beach Habitat (345) [2007 update]
- Emergent Wetland Habitat (345) [2007 update]
- Forest Habitat (345) [2007 update]
- Grassland Habitat (345) [2007 update]
- Urban Peregrine Habitat (345) [2007 update]
- Wood Turtle Habitat (345) [2007 update]
- Wetlands [2002 update]
- Class 1 Rivers (300ft round buffer) [2008 update]
- Natural Heritage Priority Sites [2007 update]

Habitat 345 Rank:

- 3: Habitat for State Threatened Species
- 4: Habitat for State Endangered Species
- 5: Habitat for Federal Threatened and Endangered Species

