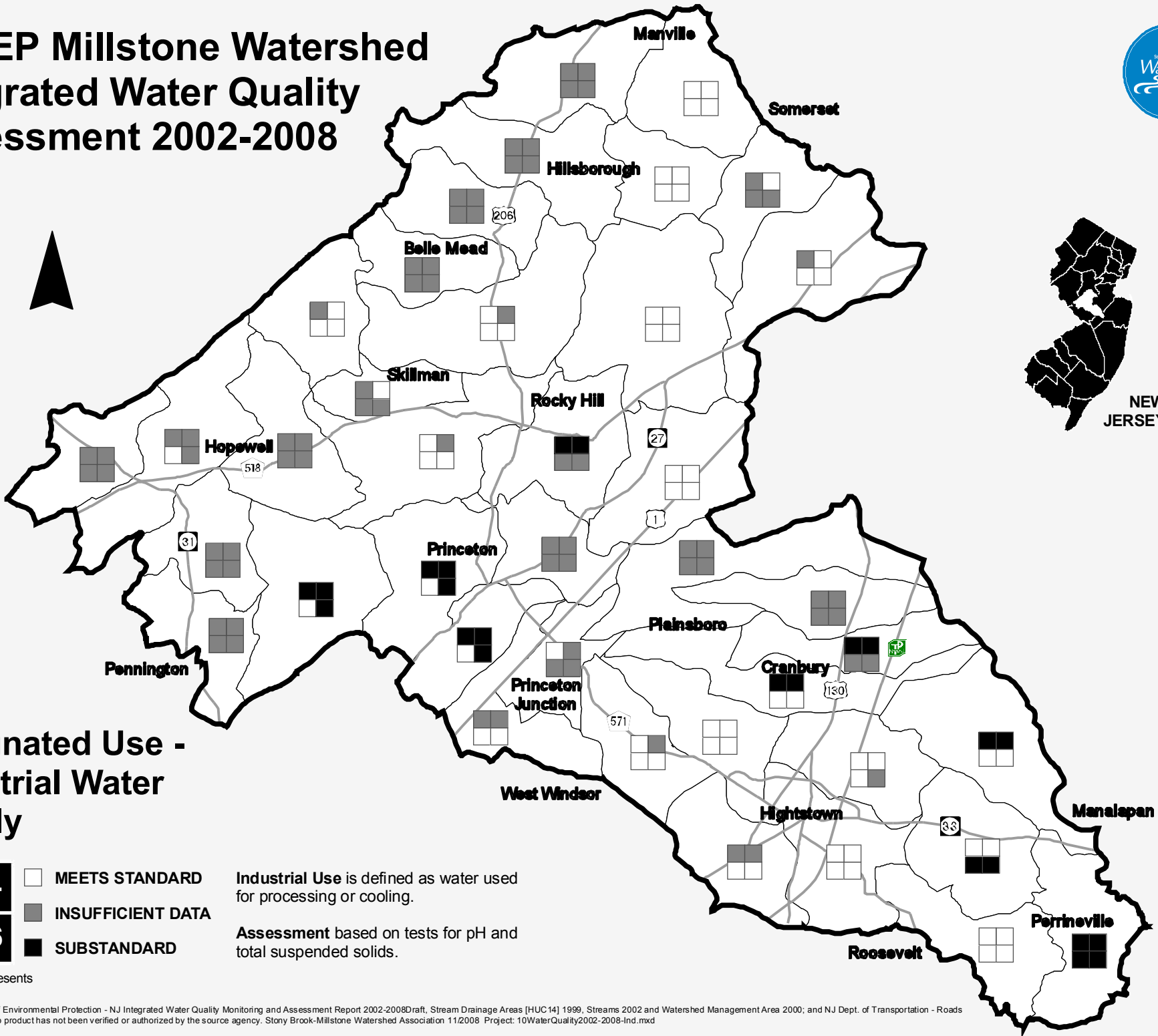
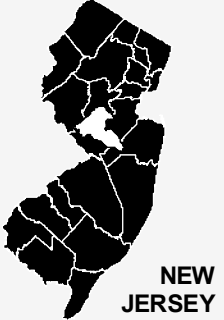


# NJDEP Millstone Watershed Integrated Water Quality Assessment 2002-2008



## Designated Use - Industrial Water Supply

<b>02</b>	<b>04</b>	☐ MEETS STANDARD
<b>08</b>	<b>06</b>	■ INSUFFICIENT DATA
		■ SUBSTANDARD

Industrial Use is defined as water used for processing or cooling.  
Assessment based on tests for pH and total suspended solids.

Each block represents a reporting year.

Data Sources: NJ Dept. of Environmental Protection - NJ Integrated Water Quality Monitoring and Assessment Report 2002-2008Draft, Stream Drainage Areas [HUC14] 1999, Streams 2002 and Watershed Management Area 2000; and NJ Dept. of Transportation - Roads 2007. This secondary map product has not been verified or authorized by the source agency. Stony Brook-Millstone Watershed Association 11/2008 Project: 10WaterQuality2002-2008-Ind.mxd