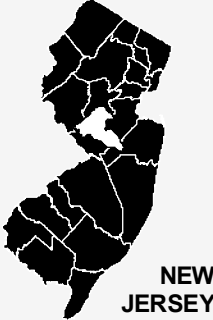
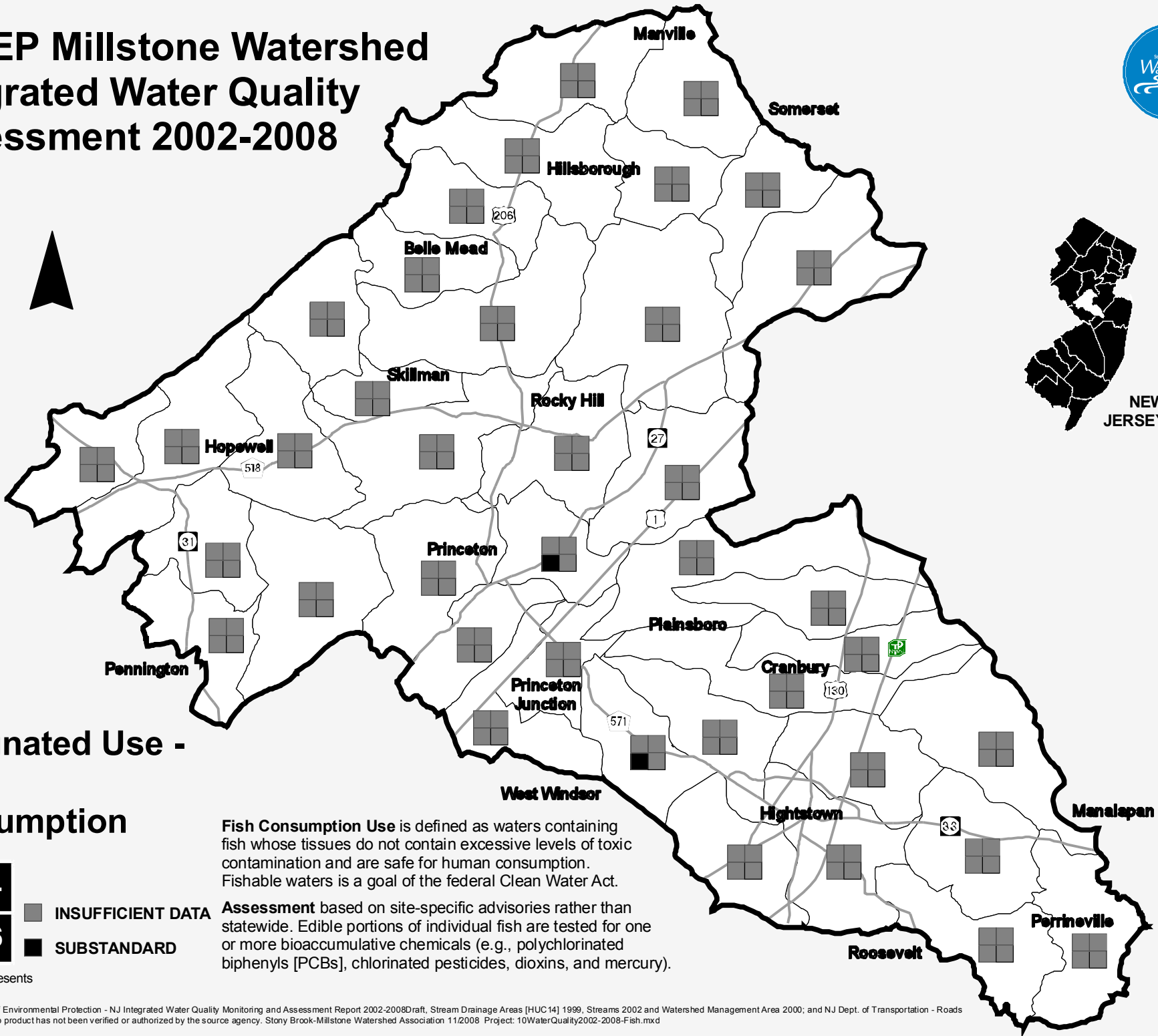


NJDEP Millstone Watershed Integrated Water Quality Assessment 2002-2008



Designated Use - Fish Consumption

02	04	■	INSUFFICIENT DATA
08	06	■	SUBSTANDARD

Each block represents a reporting year.

Fish Consumption Use is defined as waters containing fish whose tissues do not contain excessive levels of toxic contamination and are safe for human consumption. Fishable waters is a goal of the federal Clean Water Act.

Assessment based on site-specific advisories rather than statewide. Edible portions of individual fish are tested for one or more bioaccumulative chemicals (e.g., polychlorinated biphenyls [PCBs], chlorinated pesticides, dioxins, and mercury).

Data Sources: NJ Dept. of Environmental Protection - NJ Integrated Water Quality Monitoring and Assessment Report 2002-2008Draft, Stream Drainage Areas [HUC14] 1999, Streams 2002 and Watershed Management Area 2000; and NJ Dept. of Transportation - Roads 2007. This secondary map product has not been verified or authorized by the source agency. Stony Brook-Millstone Watershed Association 11/2008 Project: 10WaterQuality2002-2008-Fish.mxd