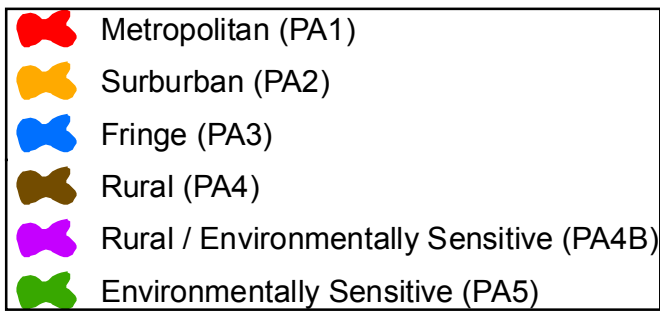
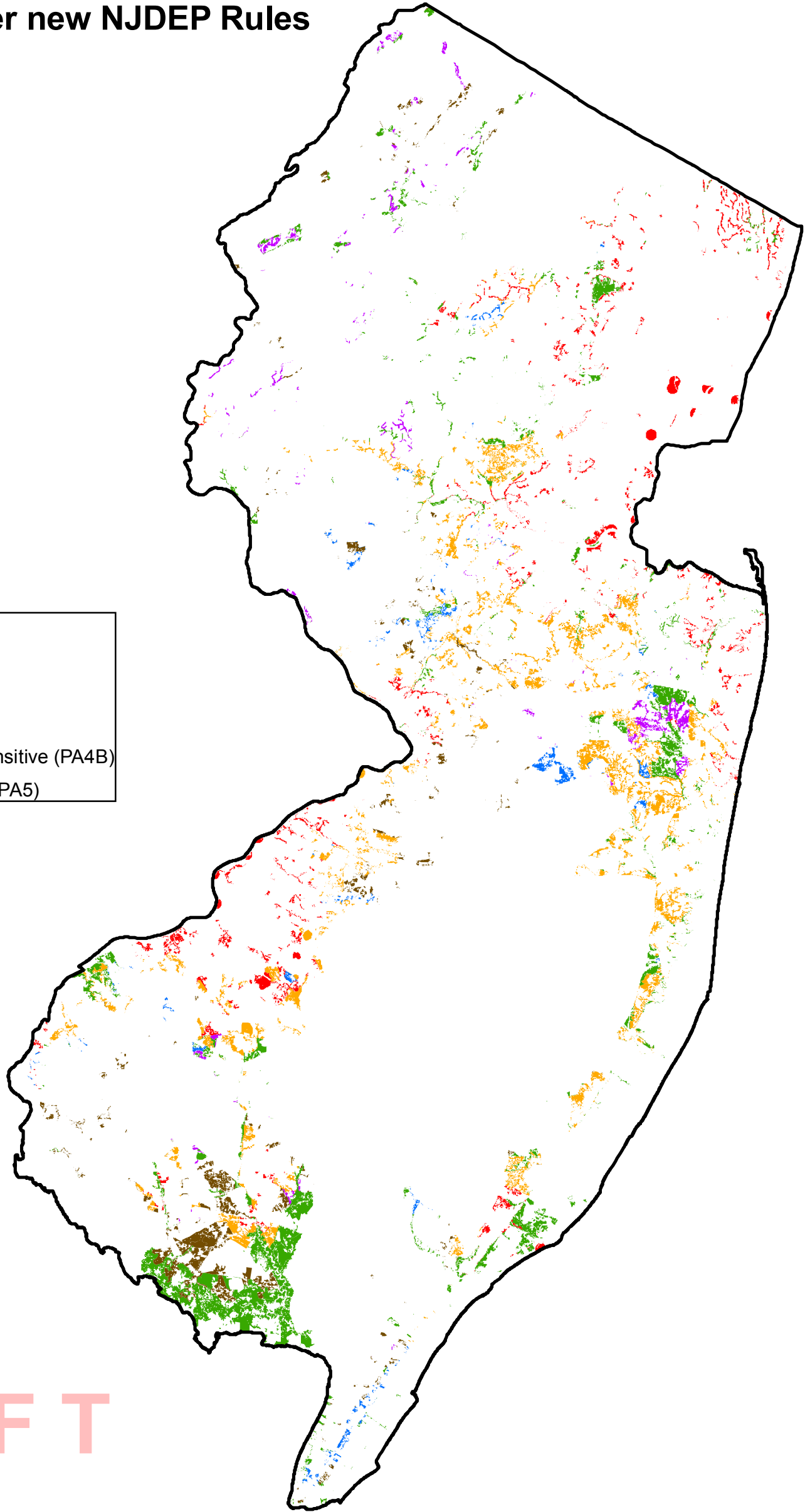


# Environmentally Sensitive Areas to be Removed from Sewer Service Areas under new NJDEP Rules



\* Environmentally Sensitive Areas to be removed from sewer service areas in accordance with new NJDEP wastewater planning rules



# DRAFT

Planning Area	Total acreage in Planning Area	Acreage of environmentally sensitive areas to be removed from sewer service areas	Percent of planning area including environmentally sensitive areas to be removed from sewer service areas	Percent of environmentally sensitive areas to be removed from sewer service by planning area
Metropolitan (PA1)	839532	37522	4%	14%
Suburban (PA2)	539146	83845	16%	31%
Fringe (PA3)	121609	10373	9%	4%
Rural (PA4)	613605	32139	5%	12%
Rural Environmentally Sensitive (PA4B)	322513	13418	4%	5%
Environmentally Sensitive (PA5)	605929	95743	16%	35%
<b>TOTAL</b>	<b>3042334</b>	<b>273040</b>		

**DATA Source:**

- NJ Sewer Service Area 11/2008
- NJSDRP Planning Areas 12/02/2008
- \*the SSA used for this analysis are the SSA that needs to be removed based on its proximity to DEP Protected Environmentally Sensitive Areas

**DEP Protected Environmentally Sensitive Areas Include:**

- Bald Eagle Foraging Habitat (345) [2007 update]
- Beach Habitat (345) [2007 update]
- Emergent Wetland Habitat (345) [2007 update]
- Forest Habitat (345) [2007 update]
- Grassland Habitat (345) [2007 update]
- Urban Peregrine Habitat (345) [2007 update]
- Wood Turtle Habitat (345) [2007 update]
- Wetlands [2002 update]
- Class 1 Rivers (300ft round buffer) [2008 update]
- Natural Heritage Priority Sites [2007 update]